



GAT MONTHLY MEMBERSHIP PROGRESS REPORT

Results as of: 5/31/2023

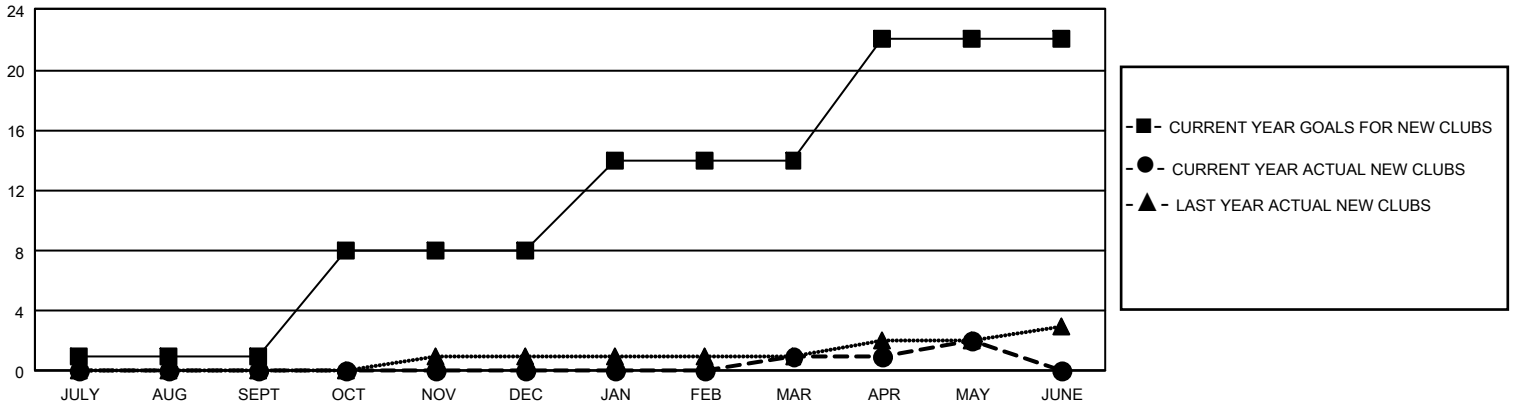
GMT Constitutional Area 1, Group C

REPORT DOES NOT INCLUDE CLUBS IN UNDISTRICTED AREAS.

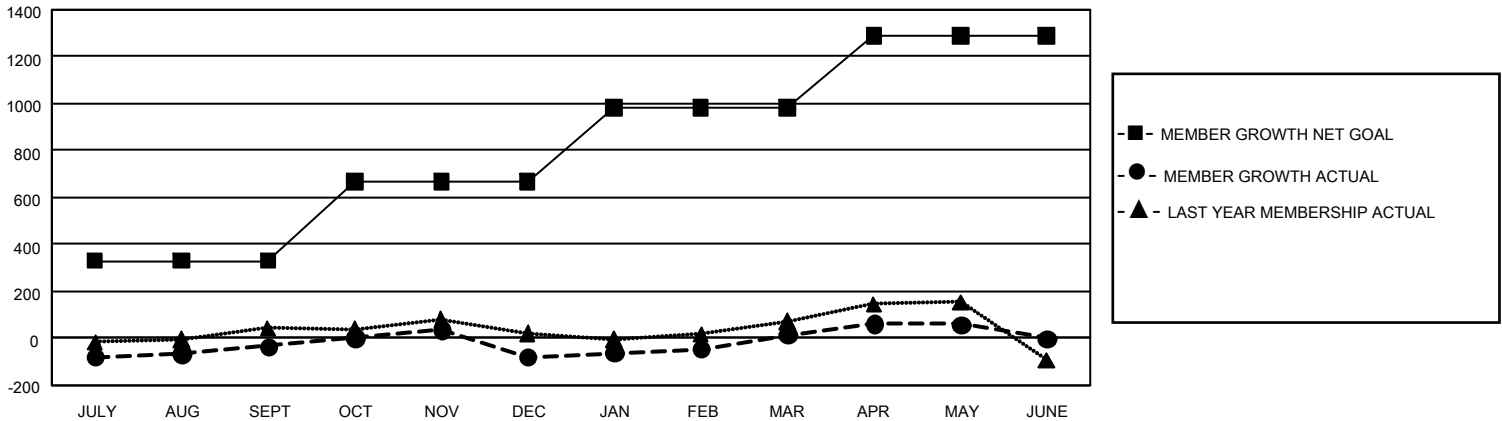
Clubs			
RESULTS FOR 2022-2023			
QUARTER	NEW CLUB GOAL	NEW CLUBS	DROPPED CLUBS
JULY/AUG/SEPT	3	0	4
OCT/NOV/DEC	21	0	0
JAN/FEB/MAR	18	1	1
APR/MAY/JUNE	24	1	0

Members			
RESULTS FOR 2022-2023			
QUARTER	MEMBER GROWTH NET GOAL	MEMBER GROWTH ACTUAL	DROPPED MEMBERS ACTUAL (including transfers)
JULY/AUG/SEPT	330	448	416
OCT/NOV/DEC	338	442	468
JAN/FEB/MAR	313	441	315
APR/MAY/JUNE	308	337	269

GOALS AND ACTUAL NEW CLUBS CUMULATIVE



GOALS AND ACTUAL MEMBERS CUMULATIVE



DROPPED CLUBS: 5 DROPPED MEMBERS DECEASED 244 CLUB CANCELLED 17 OTHER 1,207 TOTAL 1,468	412 CLUBS OF 630 ADDED 1 OR MORE NEW MEMBERS	GENDER DISTRIBUTION MALE 13,222 (67.22%) FEMALE 6,440 (32.74%) NON BINARY 0 (0.00%) PREFER NOT TO ANSWER 8 (0.04%)
	CLICK HERE FOR CUMULATIVE MEMBERSHIP DATA	TOTAL FAMILY UNIT MEMBERS 3,962 FAMILY MEMBERS PAYING HALF DUES 2,009